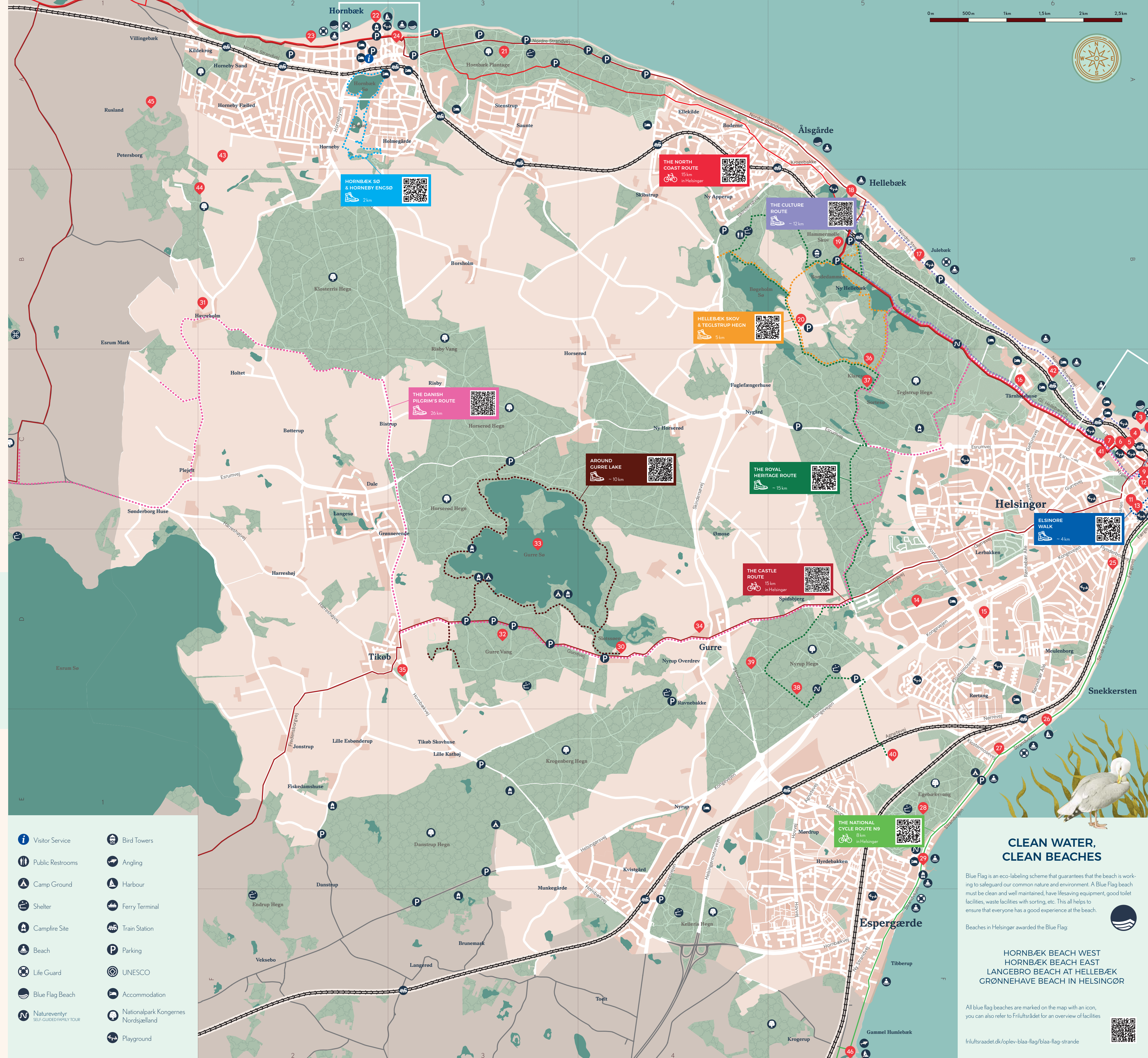


- 1 Kulturhavn Kronborg C7
- 2 Helsingør Marina C7
- 3 Grønnehave Strand C6
- 4 Øresundskvariet C6
- 5 Marienlyst Slot & Slotspark C6
- 6 Hamlet's Grav C6
- 7 Ophelia Kilde C6
- 8 Sct. Mariæ Kirke & Karmeliterklosteret C7
- 9 Sankt Olai Kirke C6
- 10 Skibslarerergården C7
- 11 Munkegade C6
- 12 Gl. Færgestræde C6
- 13 Anna Queens Stræde C6
- 14 Teknisk Museum D5
- 15 Multiparken D6
- 16 Gl. Hellebækvej C6
- 17 Julebæk B5
- 18 Hellebæk B5
- 19 Hammermøllen B5
- 20 Hellebæk Kohave B5
- 21 Hornbæk Plantage A3
- 22 Hornbæk Havn A2
- 23 Hornbæk Strand A2
- 24 Det Gamle Fiskerleje A3
- 25 Trykkerdammen D6
- 26 Snekkersten Havn E6
- 27 Snekkersten Kro & Sykkubben E6
- 28 Egebæksvang E5
- 29 Espergærde Havn E5
- 30 Gurre Slotsruin D4
- 31 Gurre Å B2
- 32 Gurre Vang D3
- 33 Gurre Sø D3
- 34 Sankt Jakobs Kapel D4
- 35 Tikøb Kirke D3
- 36 Teglstруп Hegn C5
- 37 Sortesø & Klaresø C5
- 38 Nyrup Hegn D5
- 39 Milepælshøjen D4
- 40 Flynderupgård E5
- 41 Rakkerenden Kløft C6
- 42 Lappestens Batteri C6
- 43 Ræveskiftet A2
- 44 Rusland B2
- 45 Rudolph Tegners Museum & Skulpturpark A1
- 46 Louisiana Museum of Modern Art F5



HOW TO TAKE CARE OF HELSINGØR

We are very committed to caring for our city and surroundings. Our city has a unique combination of cultural heritage, beautiful nature, fantastic beaches, and international-class cultural offerings. To keep it this way, we also need your help.

- SHOP LOCAL AND RESPONSIBLY
- EAT LOCALLY AND WHAT'S IN SEASON
- BIN IT. DON'T SLING IT
- REFILL, AGAIN AND AGAIN
- MINIMIZE YOUR ENERGY AND WATER CONSUMPTION
- HIKE, BIKE, CHARGE AND USE PUBLIC TRANSPORT
- EXPLORE BEYOND OUR URBAN FLAGSHIPS



HELSINGØR ENCYCLOPEDIA

HELSINGØR LEKSIKON · HELSINGØR-LEXIKON

Your local history encyclopedia, where users, local historians, and museum professionals contribute articles and knowledge.

Dit lokalhistoriske leksikon, hvor brugere, lokalhistorikere og museumstolk bidrager med artikler og viden.

Ihre Enzyklopädie der lokalen Geschichte wo der Nutzer, Lokalhistoriker und Museumsfachleute mit Artikeln und Wissen beitragen.

helsingorleksikon.dk

ACCOMMODATION

OVERNATNING · ÜBERNACHTUNG

Hotels and hostels

Marienlyst Strandhotel* · Nordre Strandvej 2, Helsingør marienlyst.dk

Konventum* · Erling Jensens Vej 1, Helsingør konventum.dk

Højstrupgård* · Ejler Jensens Vej 1, Helsingør hojstrupgaard.dk

Hotel Hamlet · Bramstræde 5, Helsingør hotelhamlet.dk

Hotel Skandia · Bramstræde 1, Helsingør hotelskandia.dk

Hotel Villa Brinkly · Strandvejen 258, Skotterup brinkly.dk

Comwell Borupgaard* · Nørrevej 80, Snekkersten comwell.com

Hotel Sleep2Night · Industrivej 19, Helsingør sleep2night.com

Danhostel Helsingør · Nordre Strandvej 24, Helsingør helsingorhostel.dk

Helsingør Feriebý · Sperlings Alle 43A, Helsingør folkeferienfonden.dk

Hotel Hornbækhus* · Skovvej 7, Hornbæk hornbaekhus.dk

Hotel Villa Strand · Hornbæk Kystvej 12, Hornbæk villastrand.dk

Hotel Bretagne* · Sauntevej 18, Hornbæk hotelbretagne.dk

Hotelpension Ewaldsgaarden · Johs. Ewaldsvej 5, Hornbæk ewaldsgaarden.dk

Campsites

Helsingør Camping & Cottages* · Strandalleen 2, Helsingør helsingorcamping.dk

DCU-Camping Hornbæk · Planetvej 4, Hornbæk dcu.dk

Nyrup Camping & Cottages · Kongevejen 183, Helsingør nyrupcamping.dk

Nordsjællands Feriepark og Camping · Stormlugen 20, Ålsgårde nord-camp.dk

Bike rental

Helsingør Station · Færgvej 24, Helsingør · Just across from Helsingør Station, main entrance [donkeybike](https://donkeybike.dk)

Helsingør Camping & Cottages · Strandalleen 2, Helsingør helsingorcamping.dk

* Green Key - The International Ecolabel for Tourism

- Visitor Service
- Public Restrooms
- Camp Ground
- Shelter
- Campfire Site
- Beach
- Life Guard
- Blue Flag Beach
- Natureventyr SELF-GUIDED FAMILY TOUR
- Bird Towers
- Angling
- Harbour
- Ferry Terminal
- Train Station
- Parking
- UNESCO
- Accommodation
- Nationalpark Kongernes Nordsjælland
- Playground

ØRESUND



FOR ALL OF US WHO SPEND TIME IN NATURE

Nature offers many wonderful experiences for us humans, but it is also the habitat of many animals and plants. Nature is at once inspiring, indispensable, and irreplaceable, which is why we must take good care of it.

- WE GREET THOSE WE MEET AND SHOW CONSIDERATION
- LEAVE ONLY FOOTPRINTS AND TAKE ONLY MEMORIES HOME
- WE KEEP OUR DOGS ON A LEASH SO THAT THEY DO NOT DISTURB BIRDS AND OTHER WILDLIFE UNNECESSARILY
- WE DO OUR BEST NOT TO DISTURB BIRDS AND OTHER ANIMALS AND WE LEAVE PLANTS FOR OTHERS TO ENJOY
- WE AVOID DISTURBING NATURE AS MUCH AS POSSIBLE BETWEEN SUNSET AND SUNRISE

Read more about the many nature experiences in the National Park Kongernes Nordsjælland in and around Helsingør.

nationalparkkongernesnordsjaelland.dk

CLEAN WATER, CLEAN BEACHES

Blue Flag is an eco-labeling scheme that guarantees that the beach is working to safeguard our common nature and environment. A Blue Flag beach must be clean and well maintained, have lifesaving equipment, good toilet facilities, waste facilities with sorting, etc. This all helps to ensure that everyone has a good experience at the beach.

Beaches in Helsingør awarded the Blue Flag

HORNBÆK BEACH WEST
HORNBÆK BEACH EAST
LANGEBRO BEACH AT HELLEBÆK
GRØNNEHAVE BEACH IN HELSINGØR

All blue flag beaches are marked on the map with an icon, you can also refer to Friiustrådet for an overview of facilities

friiustradet.dk/oplev-blaa-flag/blaa-flag-strande

